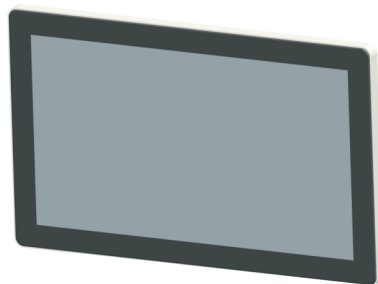


- Professional makes classics
- Development production marketing integration
- SAW & PCAP & IR touch screen
- 3 years warranty



21.5" Touch Monitor

These touch monitors are the most economic touch solutions which designed and developed for OEM and system intergration and widely used in retail ,self- service, gaming and entertainment applications.

Established in 2006, the manufacturer is a leading touch solution provider in kunshan , China. Products include PCAP and SAW touch screen, open frame touch monitor, desktop touch monitor and All-in-one touch computer. We concentrate on designing and manufacturing reliable, durable and cost competitive products.

As an outstanding china touchscreen provider, we have experienced electronic engineers and technical experts of the industry who are determined to lead the touch screen industry into a new era of information technology.

We have been granted ISO9001, CE, FCC, RoHS etc. certifications.

Product Brief

key technology

Waterproof function: Excellent waterproof performance reach IP65 rate. Add waterproof and dust proof strip between capacitive screen's and aluminum frame. This strip is made of EVA and double-sided tape without substrate material.

Highly transparent EVA material has good capability of withstand low temperature and water resistance and no effect on appearance

Double-sided tape without substrate has perfect waterproof performance which can adhere object well and prevent the drop.

Good dimensional stability, can be applied to a wider temperature range and harsh surroundings.

Architectural design: True flat screen frame made of SPCC material. Through high temperature dusting, the black powder even cover the aluminum frame surface. Toughened and frame printed in black capacitive screen who connecting with the black aluminum frame fully. The capacitive screen with pure black edge embedded into the black appearance frame seamless, showing a pure black effect.

Key structure

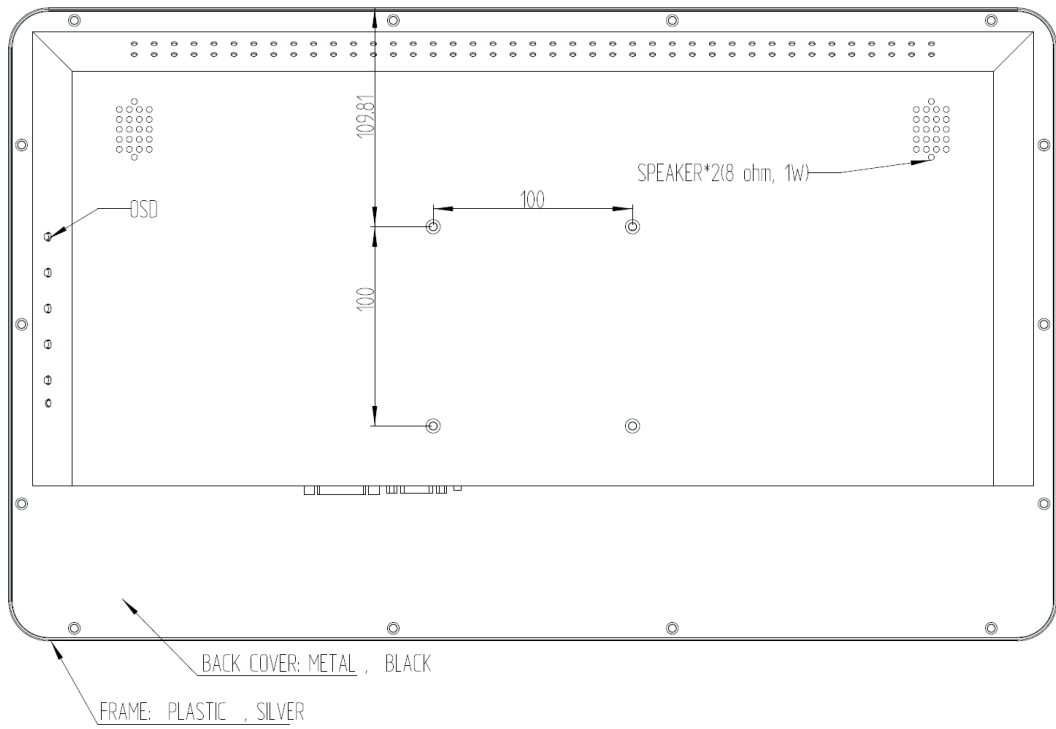
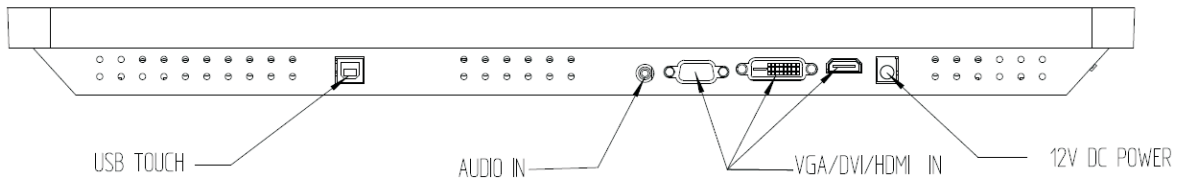
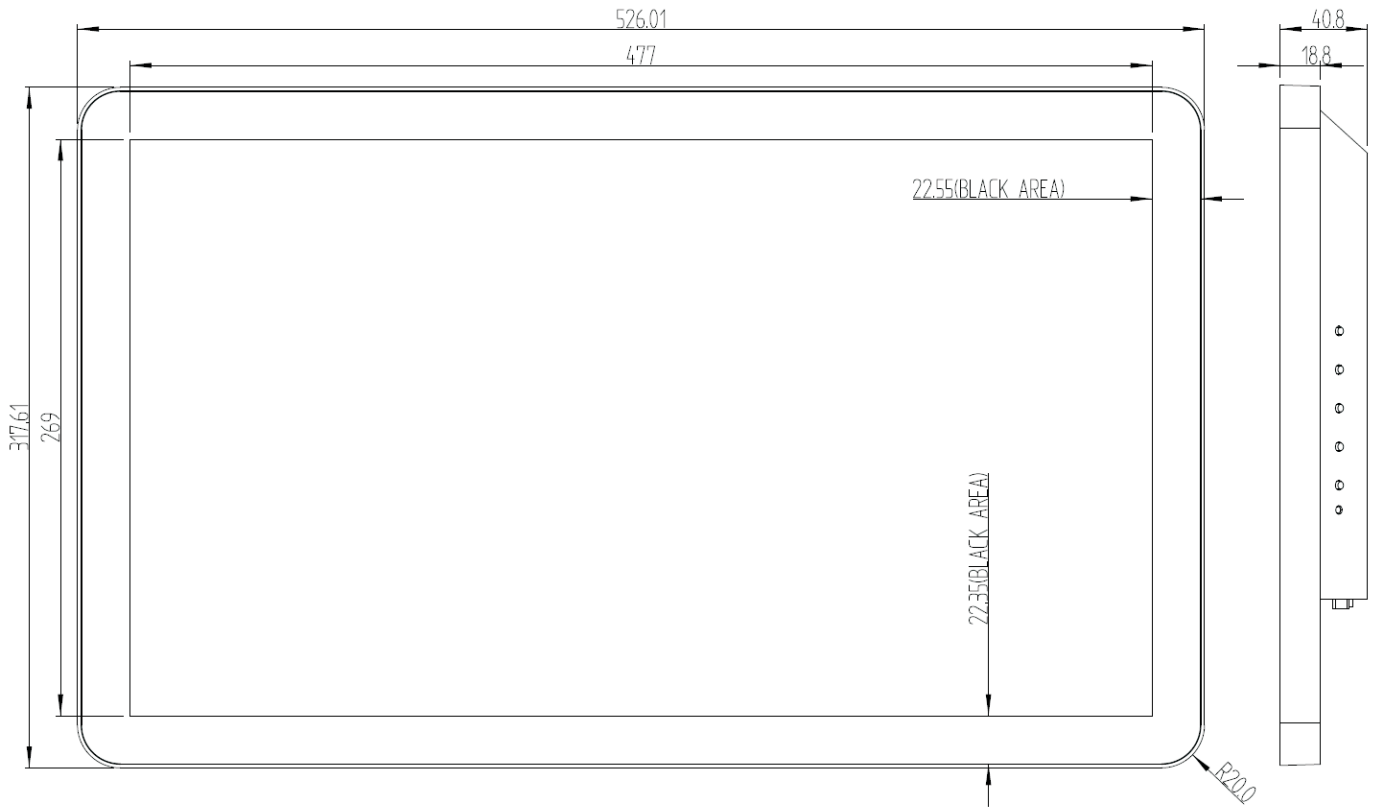
Support multi touch function
A finger or touch pen
USB touch interface, plug and play
VGA/DVI/HDMI display interface
Toughened glass capacitive screen
16:9 display screen
Free optional accessories

Application

Finance
Gaming
Transportation
Advertisement
Trade
Post and telecommunications
Tax revenue
Insurance

Version:A0

Product Drawing



Technical parameters

Display specification

Model	MACHITL215
Display size	16 : 9
Active area	476.64 (W)mm x 268.11 (H) mm
Native resolution	1920x 1080@60Hz
Pixel pitch	0.24825(mm) x 0.24825(mm)
Colors	16.7M
Brightness(typical)	LED panel: 500 (cd/m ²)
	Display: 430 nits with touch
Contrast ratio(typical)	3000:1
Response time(typical)	18 ms
Viewing angle(typical)	R/L:89/89° (typ) U/D:89/89° (typ)
Input interface	VGA、 DVI、 HDMI
OSD	Contrast, Brightness, Horizontal vertical image size and position, Color temperature, The language selection, RESET, Exit OSD.

Touch Specifications

Touch screen	21.5 " PCAP
Touch point	10 points
Touch accuracy	2mm
Minimum touch body	Ø7mm
Touch activation force	10g
Touch response time	10ms (typ)
IC	ILITeK
Material	2 mm strengthen glass
Surface durability	Mohs' 7H
Light transmission	86%
Touch resolution	4096*4096
Input method	Finger、 Touch pen
Expected life performance	50,000,000 times

Technical parameters

Other Specifications

Power supply	DC: +24VDC \pm 5%		
IP(touch screen with frame)	IP 65		
MTBF	50,000h		
Dimensions	Product: 526.01mm*317.61mm*40.8mm		
	Package: 640.0mm*432.0mm*140.0mm		
Weight	Product: 5.0kg		
	Package: 6.0kg		
Temperature	Operating: 0° C ~ 40°C		
	Storage: -20° C ~ 60°C		
Humidity	Operationg: 20%~80%		
	Storage: 10%~90%		
Accessories(standard)	Signal Cables	Connector	USBA-USBB
		Length	1.8 m \pm 30mm
		Color	Gray white
	VGA Cable	Type	D-SUB 15Pin
		Length	1.8 m \pm 30mm
		Color	Black
	Power Cord	Type	American three plug 18/3C +SJT 105 degrees C
		Length	1.8 m \pm 30mm
		Color	Black
	Adapter	Type	M120300P911(12V 3A)
		Color	Black